

## CONTROL STATIONS CONTROL BOXES FOR CRANE



2145.01.2



2145.01.4

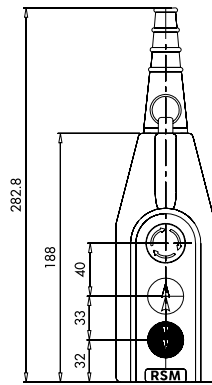


2145.01.6

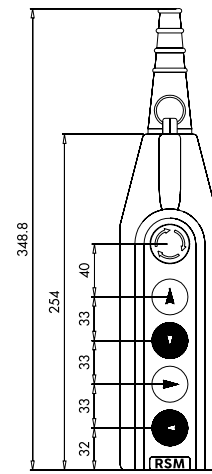
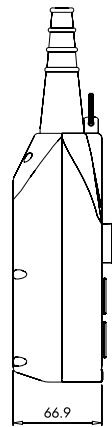


2145.01.8

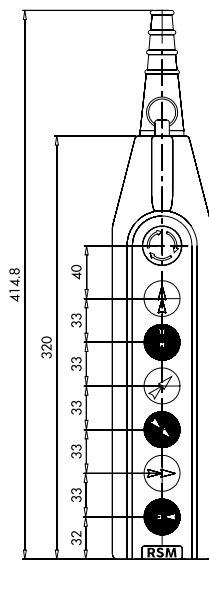
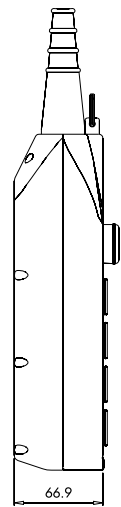
Control Boxes For Crane - IP65				
Code No	Button Qty	Speed	Box Color	Pcs in Box
2145.01.1	2	Double Speed	Yellow - Black	1
2145.01.2	3 (30 mm Emrg. Stop)	Double Speed	Yellow - Black	1
2145.01.3	4	Double Speed	Yellow - Black	1
2145.01.4	5 (30 mm Emrg. Stop)	Double Speed	Yellow - Black	1
2145.01.5	6	Double Speed	Yellow - Black	1
2145.01.6	7 (30 mm Emrg. Stop)	Double Speed	Yellow - Black	1
2145.01.7	8	Double Speed	Yellow - Black	1
2145.01.8	9 (30 mm Emrg. Stop)	Double Speed	Yellow - Black	1



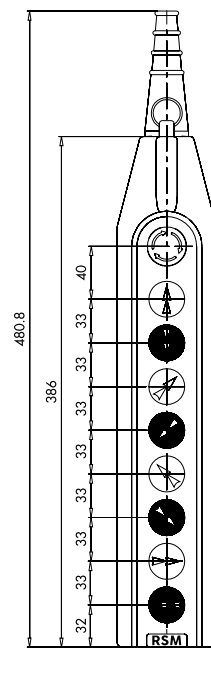
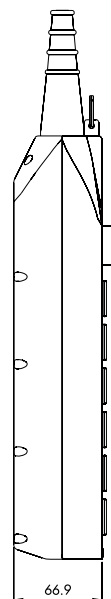
2145.01.1  
2145.01.2



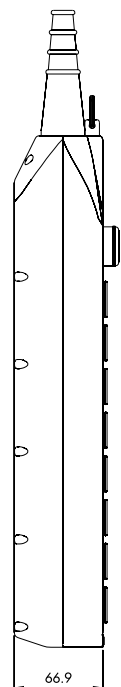
2145.01.3  
2145.01.4



2145.01.5  
2145.01.6



2145.01.7  
2145.01.8



## CONTROL STATIONS CONTROL BOXES FOR CRANE

RSM

### General Features

- Aesthetic look and ergonomic usage with assistance of ABS reinforced material
- Mechanical protection preventing operation in opposite direction at same moment
- Maximum resistance to environment conditions with waterproof body and buttons
- Speed function with 2 grades
- Flexible cable pipe

### Technical Dimensions

Operating Temperature	: min./max. °C -5/+85
Protection Degree	: IP65
Mechanical Life	: 500.000 operations min. (50 cyc/min)
Electrical Life	: 100.000 operations min. (20 cyc/min)
Operating Voltage (Ue)	: 250 V AC
Operating Current (Ie)	: 4 A
Insulation Voltage (Ui)	: 300 V
Impact Resistance (Uimp)	: 2.5 kV
Short Circuit Breaking Capacity (Icn)	: 1 kA
Insulation Resistance	: 10 MΩ min. (500 V DC)
Utilization Category	: AC15
Dielectric Strength	: 1500 V AC ( for 1 minute)
Cable Section	: 1.5 - 2.5 mm <sup>2</sup>
Standard	: UL 508 TS EN 60947-5-1 VDE0660 IEC 60947-5-1