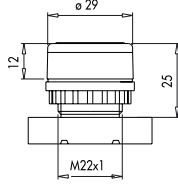




2143.10.1.1



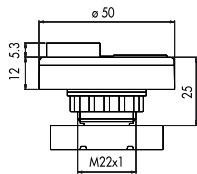
### PLASTIC BODY

#### Flush, Spring Return, 22 mm

Code No	Contact Type	Color	Pcs in Box
2143.10.1.1	1NO	Green	10
2143.10.1.2	1NO	White	10
2143.10.1.3	1NO	Blue	10
2143.10.1.4	1NO	Yellow	10
2143.10.1.5	1NO	Black	10
2143.10.1.6	1NC	Red	10



2143.10.2.1



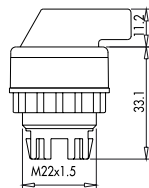
### PLASTIC BODY

#### Double, Spring Turn, 22 mm

Code No	Contact Type	Type	Color	Pcs in Box
2143.10.2.1	1NO+1NC	-	Red-Green	10
2143.10.2.2	1NO+1NC	-	Black-White	10
2143.10.2.3	1NO+1NC	Extended	Red-Green	10
2143.10.2.4	1NO+1NC	Extended	Black-White	10



2143.10.3.1



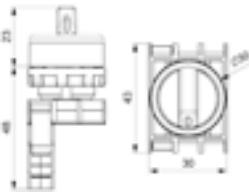
### PLASTIC BODY

#### Selector, 22 mm

Code No	Contact Type	Type	Position	Pcs in Box
2143.10.3.1	1NO	-	0-1	10
2143.10.3.2	1NO	Spring Return	0-1	10
2143.10.3.3	2NO	-	2-0-1	10
2143.10.3.4	2NO	Single Spring Return	2-0-1	10
2143.10.3.5	2NO	Double Spring Return	2-0-1	10



2143.10.4.1

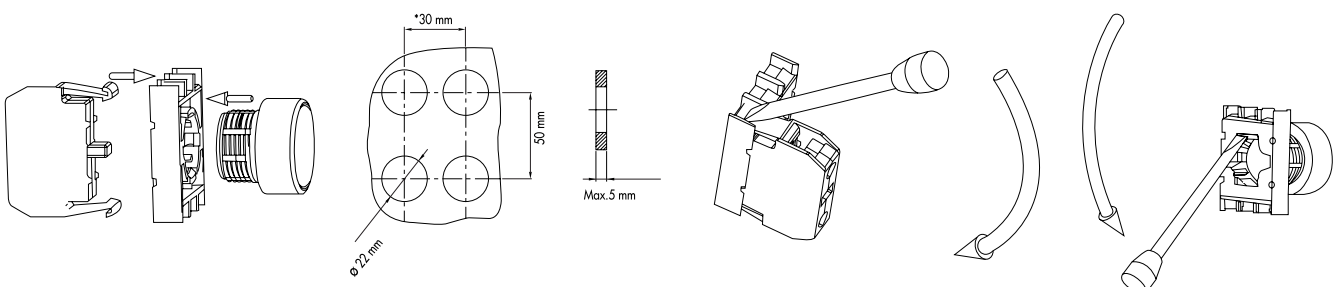


### PLASTIC BODY

#### Illuminated Selector, 22 mm

Code No	Contact Type	Type	Position	Color	Pcs in Box
2143.10.4.1	1NO	-	0-1	Green	10
2143.10.4.2	1NO	Spring Return	0-1	Green	10
2143.10.4.3	2NO	-	2-0-1	Green	10
2143.10.4.4	2NO	Single Spring Return	2-0-1	Green	10
2143.10.4.5	2NO	Double Spring Return	2-0-1	Green	10

## Assembly



\*The mounting distance in emergency and mushroom buttons increases up to max. 75 mm instead of 30 mm

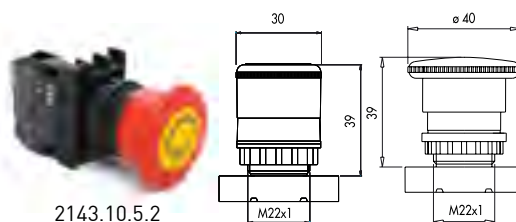
## IP50 / CONTROL UNITS

# RSM

### PLASTIC BODY

#### Emergency Stop $\varnothing 30 - \varnothing 40$ mm

Code No	Contact Type	Type	Dia.	Pcs in Box
2143.10.5.1	1NC	-	40 mm	10
2143.10.5.2	1NC	With Label	40 mm	10
2143.10.5.3	1NC	-	30 mm	10
2143.10.5.4	1NC	Mushroom Spring	30 mm	10

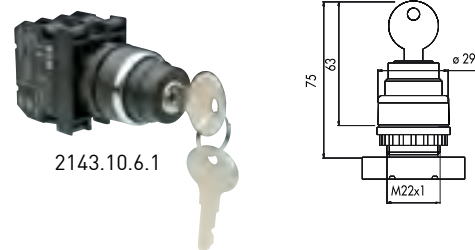


2143.10.5.2

### PLASTIC BODY

#### Key Operated, 22 mm

Code No	Contact Type	Type	Position	Pcs in Box
2143.10.6.1	1NO	Stay Put	0-1	10
2143.10.6.2	1NO+1NC	Spring R.	0-1	10
2143.10.6.3	1NO	Single Spring R.	2-0-1	10
2143.10.6.4	2NO	Double Spring R.	2-0-1	10
2143.10.6.5	1NO	Key Removal	0-1	10
2143.10.6.6	1NO+1NC	Key Removal	2-0-1	10



2143.10.6.1

### IP50 Spare Parts for Control Units

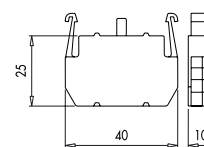
Code No	Type	Features	Color	Pcs in Box
2143.10.7.1	Contact Block	1NO	-	20
2143.10.7.2	Contact Block	1NC	-	20
2143.10.7.3	Contact Block	Light Contact Block	-	20
2143.10.7.4	Illimination Block with LED	12 - 30 V AC / DC	White	20
2143.10.7.5	Illimination Block with LED	12 - 30 V AC / DC	Red	20
2143.10.7.6	Illimination Block with LED	12 - 30 V AC / DC	Blue	20
2143.10.7.7	Illimination Block with LED	12 - 30 V AC / DC	Yellow	20
2143.10.7.8	Illimination Block with LED	12 - 30 V AC / DC	Green	20
2143.10.7.9	Illimination Block with LED	100-230 V AC	White	20
2143.10.7.10	Illimination Block with LED	100-230 V AC	Red	20
2143.10.7.11	Illimination Block with LED	100-230 V AC	Blue	20
2143.10.7.12	Illimination Block with LED	100-230 V AC	Yellow	20
2143.10.7.13	Illimination Block with LED	100-230 V AC	Green	20



2143.10.7.1



2143.10.7.2



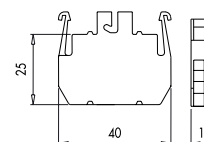
IP50 Contact Block



2143.10.7.3



2143.10.7.4



IP50 Neon Lamp Mauntable Light Block