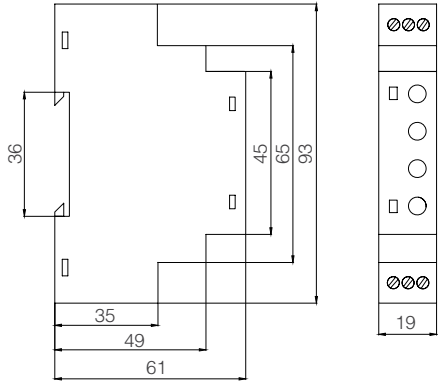




TIME RELAY / TR-01



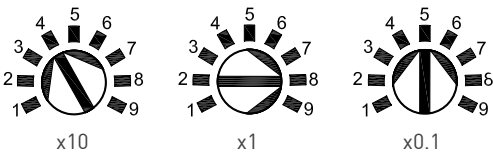
Time Setting

X10 trimpot value show the tens digit of the desired time, x1 shows the ones digit and x0.1 show the one tenths digit of the desired time.

Example: x10 = 4, x1= 8, x0.1 = 5 and

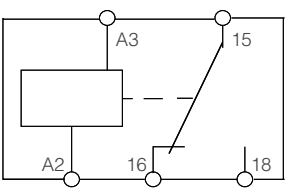
Mode= if 1s has been set the contact outlets will change position after 48.5 seconds.

x10	x1	x0.1	Mode	Set Time
4	8	5	1s	48,5 sec.
4	8	5	10s	485 sec.
4	8	5	1m	48,5 min.
4	8	5	10m	485 min.
4	8	5	1h	48,5 hour.

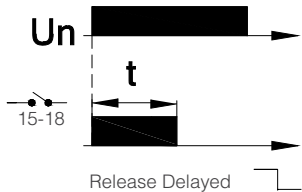
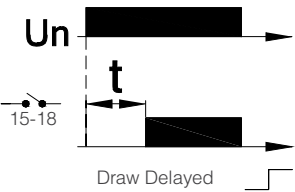
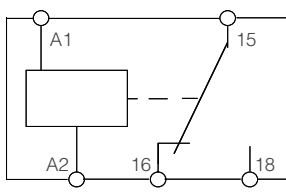


Wiring Diagrams

24 V AC / DC ± %10



220 / 230 V AC ± %20



TIME RELAY / TR-01



Specifications	TR-01
Time Interval	0,1 sn - 99,9 hours
Accuracy	<1%
Power Supply	220/230 Vac \pm %20 24Vac / dc \pm %10
Power Consumption * (220 Vac 50 Hz)	Active Power 0,9 W Visible Power 8 VA
Sudden Impact Voltage Resistance * Surge (IEC 61000-4-5)	2 kV
Quick Temporary Sudden Impact Voltage * Resistance Burst (IEC 61000-4-4)	4,4 kV
Electromagnetic RF Fields Resistance * (IEC 61000-4-3)	10 V/m
Assembly Form	Th Rail assembly (EN 60715)
Protection Class	IP20 (EN 60529)
Ambient Temperature	-5°C +50°C (Operation) -25°C +75°C (Storage)
Contact Current /Power	1 C/O, 8 A, 2000 VA

* Applies to 220/230 Vac (A1-A2) supply line.