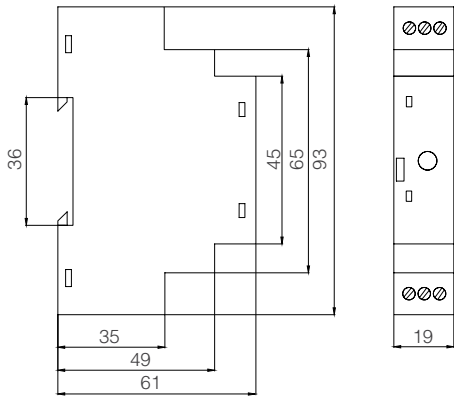


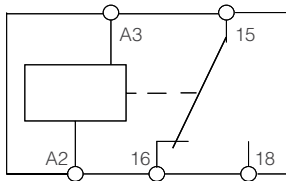
# TIME RELAY / TR-60

RSM

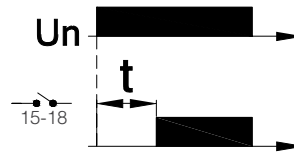
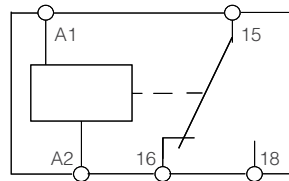


## Wiring Diagrams

24 V AC / DC  $\pm$  %10



220 / 230 V AC  $\pm$  %20



Specifications	TR-60
Time Interval	2-60 sec
Power Supply	220/230 Vac $\pm$ %20 24Vac / dc $\pm$ %10
Power Consumption * (220 Vac 50 Hz)	Active Power 0.9 W Visible Power 8 VA
Sudden Impact Voltage Resistance * Surge (IEC 61000-4-5)	2 kV
Quick Temporary Sudden Impact Voltage * Resistance * Burst (IEC 61000-4-4)	4,4 kV
Electromagnetic RF Fields Resistance * (IEC 61000-4-3)	10 V/m
Assembly Form	TH Rail assembly (EN 60715)
Protection Class	IP20 (EN 60529)
Ambient Temperature	-5°C + 50°C (Operation) -25°C + 75°C (Storage)
Contact Current /Power	1 C/O, 8 A, 2000 VA

\* Applies to 220/230 Vac (A1-A2) supply line.